

THE UNDERSIGNED HEREBY ACKNOWLEDGES THAT THE LAND SHOWN ON THIS PLAN IS WITHIN THE SUBDIVISION REGULATION JURISDICTION OF CUMBERLAND COUNTY AND THAT THIS PLAN AND ALIGNMENT IS MY FREE ACT AND DEED.

*Lucy W. Spell*  
OWNER

NORTH CAROLINA  
CUMBERLAND COUNTY  
I, *Harvey H. Allen*, a Notary Public of the County and State aforesaid, certify that *Terry M. Spell* personally appeared before me this day and acknowledged the execution of the foregoing instrument. Witness my hand and official stamp or seal, this 12th day of June, 2003. A. D. 2003.

*Harvey H. Allen*  
Notary Public  
MILLSBORO, N.C.

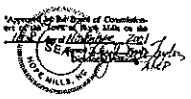
THIS SURVEY IS IN ACCORDANCE WITH GS 47-30 (1) (11) a. AND THAT THIS SURVEY CREATES A SUBDIVISION OF LAND WITHIN THE AREA OF A COUNTY/MUNICIPALITY THAT HAS AN ORDINANCE THAT REGULATES PARCELS OF LAND.

NORTH CAROLINA  
CUMBERLAND COUNTY  
I, HARVEY H. ALLEN, certify that this map was drawn under my supervision from an actual survey made under my supervision, deed and description recorded in Book ----, Page ----, that the ratio of precision as calculated by latitudes and departures is 1/10000, that the boundaries not surveyed are shown as broken lines plotted from information found in books referenced, that this map was prepared in accordance with G.S. 47-30 as amended. Witness my hand and seal this 12th day of June A.D., 2003.

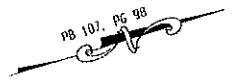
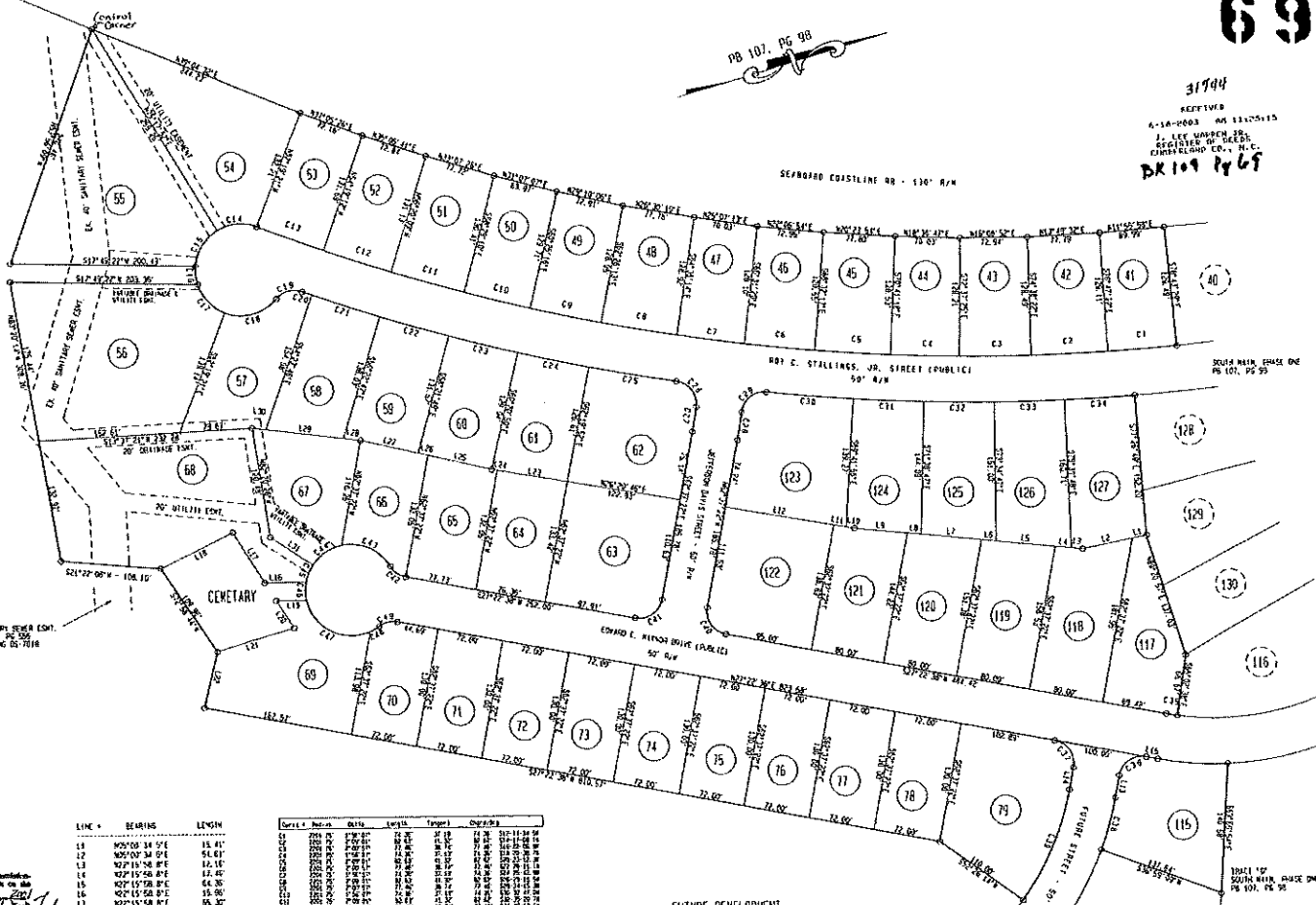
*Harvey H. Allen*  
Land Surveyor

LEGEND:  
- See Individual Notes

- NOTES:
1. There is no horizontal control within 2000 feet.
  2. Acreage determined by coordinate computation.
  3. Iron stakes at all property corners.
  4. References: PB 107, PG 98
  5. Total Area = 17.92 acres.
  6. Area within R/W = 2.80 acres.
  7. Cemetery Area = 0.25 acres.
  8. 51 Lots in Section Two.



STATE OF NORTH CAROLINA  
COUNTY OF CUMBERLAND  
I, *Harvey H. Allen*, Notary Public of the County and State aforesaid, certify that *Terry M. Spell* personally appeared before me this day and acknowledged the execution of the foregoing instrument. Witness my hand and official stamp or seal, this 12th day of June, 2003. A. D. 2003.



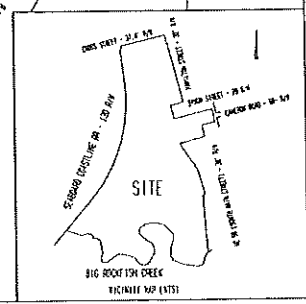
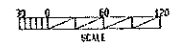
31794  
RECEIVED  
4-14-2003 AM 11:05:15  
J. LEE WARDEN, JR.  
REGISTERED DEEDS  
CUMBERLAND CO., N.C.  
BK 109 PG 69

BK 109 PG 69

Line #	Bearing	Length	Area	Perimeter	Volume
11	N05°00'34"E	18.41'			
12	N05°00'34"E	54.61'			
13	N27°19'58"E	12.11'			
14	N27°19'58"E	13.42'			
15	N07°15'28"E	64.30'			
16	N07°15'28"E	15.80'			
17	N07°15'28"E	64.65'			
18	N07°15'28"E	15.02'			
19	N07°15'28"E	67.41'			
20	N07°15'28"E	6.00'			
21	N07°15'28"E	18.81'			
22	N07°15'28"E	30.51'			
23	N07°15'28"E	36.80'			
24	N07°22'27"E	67.29'			
25	N07°22'27"E	62.60'			
26	N07°22'27"E	76.37'			
27	N07°22'27"E	6.00'			
28	N07°22'27"E	6.00'			
29	N07°22'27"E	18.81'			
30	N07°22'27"E	18.81'			
31	N07°22'27"E	18.81'			
32	N07°22'27"E	18.81'			
33	N07°22'27"E	18.81'			
34	N07°22'27"E	18.81'			
35	N07°22'27"E	18.81'			
36	N07°22'27"E	18.81'			
37	N07°22'27"E	18.81'			
38	N07°22'27"E	18.81'			
39	N07°22'27"E	18.81'			
40	N07°22'27"E	18.81'			
41	N07°22'27"E	18.81'			
42	N07°22'27"E	18.81'			
43	N07°22'27"E	18.81'			
44	N07°22'27"E	18.81'			
45	N07°22'27"E	18.81'			
46	N07°22'27"E	18.81'			
47	N07°22'27"E	18.81'			
48	N07°22'27"E	18.81'			
49	N07°22'27"E	18.81'			
50	N07°22'27"E	18.81'			
51	N07°22'27"E	18.81'			
52	N07°22'27"E	18.81'			
53	N07°22'27"E	18.81'			
54	N07°22'27"E	18.81'			
55	N07°22'27"E	18.81'			
56	N07°22'27"E	18.81'			
57	N07°22'27"E	18.81'			
58	N07°22'27"E	18.81'			
59	N07°22'27"E	18.81'			
60	N07°22'27"E	18.81'			
61	N07°22'27"E	18.81'			
62	N07°22'27"E	18.81'			
63	N07°22'27"E	18.81'			
64	N07°22'27"E	18.81'			
65	N07°22'27"E	18.81'			
66	N07°22'27"E	18.81'			
67	N07°22'27"E	18.81'			
68	N07°22'27"E	18.81'			
69	N07°22'27"E	18.81'			
70	N07°22'27"E	18.81'			
71	N07°22'27"E	18.81'			
72	N07°22'27"E	18.81'			
73	N07°22'27"E	18.81'			
74	N07°22'27"E	18.81'			
75	N07°22'27"E	18.81'			
76	N07°22'27"E	18.81'			
77	N07°22'27"E	18.81'			
78	N07°22'27"E	18.81'			
79	N07°22'27"E	18.81'			
80	N07°22'27"E	18.81'			
81	N07°22'27"E	18.81'			
82	N07°22'27"E	18.81'			
83	N07°22'27"E	18.81'			
84	N07°22'27"E	18.81'			
85	N07°22'27"E	18.81'			
86	N07°22'27"E	18.81'			
87	N07°22'27"E	18.81'			
88	N07°22'27"E	18.81'			
89	N07°22'27"E	18.81'			
90	N07°22'27"E	18.81'			
91	N07°22'27"E	18.81'			
92	N07°22'27"E	18.81'			
93	N07°22'27"E	18.81'			
94	N07°22'27"E	18.81'			
95	N07°22'27"E	18.81'			
96	N07°22'27"E	18.81'			
97	N07°22'27"E	18.81'			
98	N07°22'27"E	18.81'			
99	N07°22'27"E	18.81'			
100	N07°22'27"E	18.81'			
101	N07°22'27"E	18.81'			
102	N07°22'27"E	18.81'			
103	N07°22'27"E	18.81'			
104	N07°22'27"E	18.81'			
105	N07°22'27"E	18.81'			
106	N07°22'27"E	18.81'			
107	N07°22'27"E	18.81'			
108	N07°22'27"E	18.81'			
109	N07°22'27"E	18.81'			
110	N07°22'27"E	18.81'			
111	N07°22'27"E	18.81'			
112	N07°22'27"E	18.81'			
113	N07°22'27"E	18.81'			
114	N07°22'27"E	18.81'			
115	N07°22'27"E	18.81'			
116	N07°22'27"E	18.81'			
117	N07°22'27"E	18.81'			
118	N07°22'27"E	18.81'			
119	N07°22'27"E	18.81'			
120	N07°22'27"E	18.81'			
121	N07°22'27"E	18.81'			
122	N07°22'27"E	18.81'			
123	N07°22'27"E	18.81'			
124	N07°22'27"E	18.81'			
125	N07°22'27"E	18.81'			
126	N07°22'27"E	18.81'			
127	N07°22'27"E	18.81'			
128	N07°22'27"E	18.81'			
129	N07°22'27"E	18.81'			
130	N07°22'27"E	18.81'			

FUTURE DEVELOPMENT

PROPERTY OF  
TERRY SPELL & RALPH HOFF  
ROCKFISH CREEK TOWNSHIP  
HOPE WILLS  
SCALE: 1" = 60'  
CUMBERLAND CO.  
NORTH CAROLINA  
JUNE, 2003



RECORD  
ALLEN-ALLEN & ASSOCIATES, P.A.  
1000 W. MARKET STREET, SUITE 200  
MILLSBORO, DE 19966  
SCALE: 1" = 60'  
DATE: JUNE, 2003  
SOUTH MAIN, PHASE TWO  
ZERO LOT LINE  
BOOK FILE