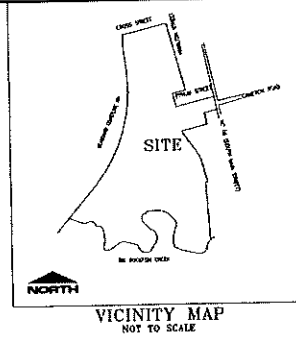
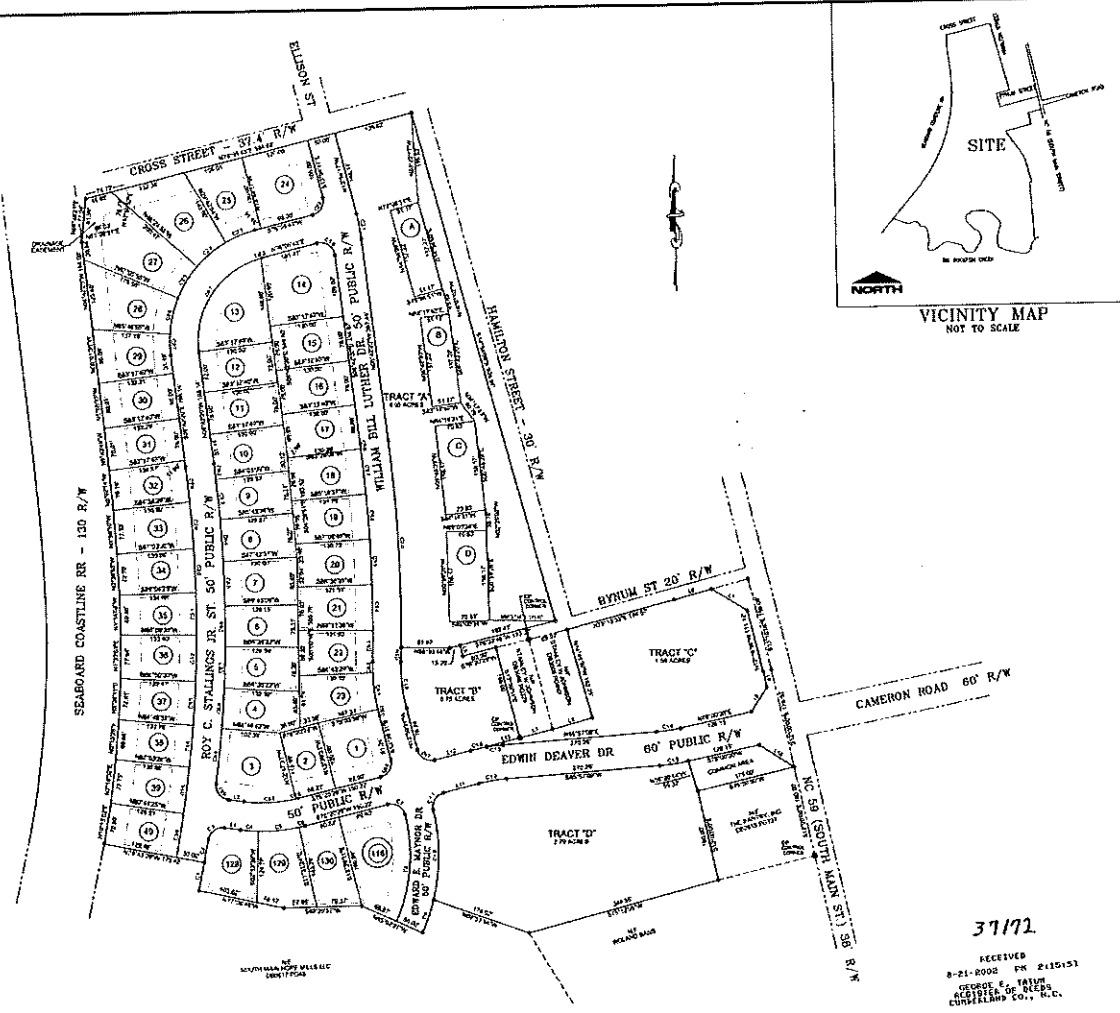


CHAIN	LENGTH	ANGLE	BEARING	CH. BEARING	COORD.
C1	87.27	293.14	29.14	N 115° 29' 14" W	87.27
C2	48.42	293.14	29.14	N 115° 29' 14" W	48.42
C3	48.42	293.14	29.14	N 115° 29' 14" W	48.42
C4	48.42	293.14	29.14	N 115° 29' 14" W	48.42
C5	48.42	293.14	29.14	N 115° 29' 14" W	48.42
C6	48.42	293.14	29.14	N 115° 29' 14" W	48.42
C7	48.42	293.14	29.14	N 115° 29' 14" W	48.42
C8	48.42	293.14	29.14	N 115° 29' 14" W	48.42
C9	48.42	293.14	29.14	N 115° 29' 14" W	48.42
C10	48.42	293.14	29.14	N 115° 29' 14" W	48.42
C11	48.42	293.14	29.14	N 115° 29' 14" W	48.42
C12	48.42	293.14	29.14	N 115° 29' 14" W	48.42
C13	48.42	293.14	29.14	N 115° 29' 14" W	48.42
C14	48.42	293.14	29.14	N 115° 29' 14" W	48.42
C15	48.42	293.14	29.14	N 115° 29' 14" W	48.42
C16	48.42	293.14	29.14	N 115° 29' 14" W	48.42
C17	48.42	293.14	29.14	N 115° 29' 14" W	48.42
C18	48.42	293.14	29.14	N 115° 29' 14" W	48.42
C19	48.42	293.14	29.14	N 115° 29' 14" W	48.42
C20	48.42	293.14	29.14	N 115° 29' 14" W	48.42
C21	48.42	293.14	29.14	N 115° 29' 14" W	48.42
C22	48.42	293.14	29.14	N 115° 29' 14" W	48.42
C23	48.42	293.14	29.14	N 115° 29' 14" W	48.42
C24	48.42	293.14	29.14	N 115° 29' 14" W	48.42
C25	48.42	293.14	29.14	N 115° 29' 14" W	48.42
C26	48.42	293.14	29.14	N 115° 29' 14" W	48.42
C27	48.42	293.14	29.14	N 115° 29' 14" W	48.42
C28	48.42	293.14	29.14	N 115° 29' 14" W	48.42
C29	48.42	293.14	29.14	N 115° 29' 14" W	48.42
C30	48.42	293.14	29.14	N 115° 29' 14" W	48.42
C31	48.42	293.14	29.14	N 115° 29' 14" W	48.42
C32	48.42	293.14	29.14	N 115° 29' 14" W	48.42
C33	48.42	293.14	29.14	N 115° 29' 14" W	48.42
C34	48.42	293.14	29.14	N 115° 29' 14" W	48.42
C35	48.42	293.14	29.14	N 115° 29' 14" W	48.42
C36	48.42	293.14	29.14	N 115° 29' 14" W	48.42
C37	48.42	293.14	29.14	N 115° 29' 14" W	48.42
C38	48.42	293.14	29.14	N 115° 29' 14" W	48.42
C39	48.42	293.14	29.14	N 115° 29' 14" W	48.42
C40	48.42	293.14	29.14	N 115° 29' 14" W	48.42
C41	48.42	293.14	29.14	N 115° 29' 14" W	48.42
C42	48.42	293.14	29.14	N 115° 29' 14" W	48.42
C43	48.42	293.14	29.14	N 115° 29' 14" W	48.42
C44	48.42	293.14	29.14	N 115° 29' 14" W	48.42
C45	48.42	293.14	29.14	N 115° 29' 14" W	48.42
C46	48.42	293.14	29.14	N 115° 29' 14" W	48.42
C47	48.42	293.14	29.14	N 115° 29' 14" W	48.42
C48	48.42	293.14	29.14	N 115° 29' 14" W	48.42
C49	48.42	293.14	29.14	N 115° 29' 14" W	48.42
C50	48.42	293.14	29.14	N 115° 29' 14" W	48.42
C51	48.42	293.14	29.14	N 115° 29' 14" W	48.42
C52	48.42	293.14	29.14	N 115° 29' 14" W	48.42
C53	48.42	293.14	29.14	N 115° 29' 14" W	48.42
C54	48.42	293.14	29.14	N 115° 29' 14" W	48.42
C55	48.42	293.14	29.14	N 115° 29' 14" W	48.42
C56	48.42	293.14	29.14	N 115° 29' 14" W	48.42
C57	48.42	293.14	29.14	N 115° 29' 14" W	48.42
C58	48.42	293.14	29.14	N 115° 29' 14" W	48.42
C59	48.42	293.14	29.14	N 115° 29' 14" W	48.42
C60	48.42	293.14	29.14	N 115° 29' 14" W	48.42
C61	48.42	293.14	29.14	N 115° 29' 14" W	48.42
C62	48.42	293.14	29.14	N 115° 29' 14" W	48.42
C63	48.42	293.14	29.14	N 115° 29' 14" W	48.42
C64	48.42	293.14	29.14	N 115° 29' 14" W	48.42
C65	48.42	293.14	29.14	N 115° 29' 14" W	48.42
C66	48.42	293.14	29.14	N 115° 29' 14" W	48.42
C67	48.42	293.14	29.14	N 115° 29' 14" W	48.42
C68	48.42	293.14	29.14	N 115° 29' 14" W	48.42
C69	48.42	293.14	29.14	N 115° 29' 14" W	48.42
C70	48.42	293.14	29.14	N 115° 29' 14" W	48.42
C71	48.42	293.14	29.14	N 115° 29' 14" W	48.42
C72	48.42	293.14	29.14	N 115° 29' 14" W	48.42
C73	48.42	293.14	29.14	N 115° 29' 14" W	48.42
C74	48.42	293.14	29.14	N 115° 29' 14" W	48.42
C75	48.42	293.14	29.14	N 115° 29' 14" W	48.42
C76	48.42	293.14	29.14	N 115° 29' 14" W	48.42
C77	48.42	293.14	29.14	N 115° 29' 14" W	48.42
C78	48.42	293.14	29.14	N 115° 29' 14" W	48.42
C79	48.42	293.14	29.14	N 115° 29' 14" W	48.42
C80	48.42	293.14	29.14	N 115° 29' 14" W	48.42
C81	48.42	293.14	29.14	N 115° 29' 14" W	48.42
C82	48.42	293.14	29.14	N 115° 29' 14" W	48.42
C83	48.42	293.14	29.14	N 115° 29' 14" W	48.42
C84	48.42	293.14	29.14	N 115° 29' 14" W	48.42
C85	48.42	293.14	29.14	N 115° 29' 14" W	48.42
C86	48.42	293.14	29.14	N 115° 29' 14" W	48.42
C87	48.42	293.14	29.14	N 115° 29' 14" W	48.42
C88	48.42	293.14	29.14	N 115° 29' 14" W	48.42
C89	48.42	293.14	29.14	N 115° 29' 14" W	48.42
C90	48.42	293.14	29.14	N 115° 29' 14" W	48.42
C91	48.42	293.14	29.14	N 115° 29' 14" W	48.42
C92	48.42	293.14	29.14	N 115° 29' 14" W	48.42
C93	48.42	293.14	29.14	N 115° 29' 14" W	48.42
C94	48.42	293.14	29.14	N 115° 29' 14" W	48.42
C95	48.42	293.14	29.14	N 115° 29' 14" W	48.42
C96	48.42	293.14	29.14	N 115° 29' 14" W	48.42
C97	48.42	293.14	29.14	N 115° 29' 14" W	48.42
C98	48.42	293.14	29.14	N 115° 29' 14" W	48.42
C99	48.42	293.14	29.14	N 115° 29' 14" W	48.42
C100	48.42	293.14	29.14	N 115° 29' 14" W	48.42

LINE	LENGTH	BEARING
L1	100.00	N 0° 0' 0" W
L2	100.00	N 0° 0' 0" W
L3	100.00	N 0° 0' 0" W
L4	100.00	N 0° 0' 0" W
L5	100.00	N 0° 0' 0" W
L6	100.00	N 0° 0' 0" W
L7	100.00	N 0° 0' 0" W
L8	100.00	N 0° 0' 0" W
L9	100.00	N 0° 0' 0" W
L10	100.00	N 0° 0' 0" W

98



NEAR BY:
DAG
CHECKED BY:
HNA
DATE: MAY 3, 2001

ALLEN-KIMLEY
& ASSOCIATES PA
INC. 2001
11100 W. HUNTERS HILL RD., SUITE 200
HOPEWELL, VA 22941-4200
TEL: (540) 326-2800
FAX: (540) 326-2801

ZERO 107 LINE
SOUTH MAIN SECTION ONE

ROCKFISH TWP.
HOPE MILLS
SCALE: 1" = 100'

STATE OF NORTH CAROLINA
COUNTY OF CUMBERLAND
I, Harvey H. Allen, Clerk
of Cumberland County, do hereby certify that the
above is a true and correct copy of the
original as recorded in my office.

THIS SURVEY IS IN ACCORDANCE WITH G.S. 41-30 (PLAT) AND
THAT THIS SURVEY CREATES A SUBDIVISION OF LAND WITHIN
THE AREA OF A COUNTY JURISDICTION THAT HAS AN
ORDINANCE THAT REGULATES THAT HAS AN ORDINANCE THAT
REGULATES THAT HAS AN ORDINANCE THAT REGULATES
PARCELS OF LAND

Harvey H. Allen
Clerk
CUMBERLAND COUNTY, N.C.

NORTH CAROLINA CUMBERLAND COUNTY HARVEY H. ALLEN
ALLEN certifies that the map was drawn under my supervision
from an actual survey made under my observation, and that
the description contained in the plat is a true and correct
description of the land shown and that the area of the land
shown is as shown on the plat and that the plat is a true and
correct copy of the original as recorded in my office.

Harvey H. Allen
Clerk
CUMBERLAND COUNTY, N.C.

"The undersigned here subscribes that the land
shown on the plat is within the jurisdiction
regulation jurisdiction of Cumberland County and
that the plat and subdivision is in compliance with and
conforms to all laws as shown or indicated"

NORTH CAROLINA CUMBERLAND COUNTY

I, Terry Spell & Ralph Huff, Notary Public of the County and
State of North Carolina, do hereby certify that
the above is a true and correct copy of the
original as recorded in my office.

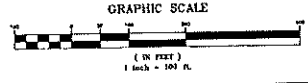
Terry Spell & Ralph Huff
Notary Public
CUMBERLAND COUNTY, N.C.

- NOTES
1. There is no horizontal control within 2000 feet.
 2. All angles determined by electronic means.
 3. All distances measured by electronic means.
 4. All distances measured by electronic means.
 5. All distances measured by electronic means.
 6. All distances measured by electronic means.
 7. The purpose of the plat is to correct said plat as shown.
 8. Front Foot 10.00
 9. Four Foot 10.00
 10. Four Foot 10.00
 11. Four Foot 10.00
 12. Four Foot 10.00
 13. Four Foot 10.00
 14. Four Foot 10.00
 15. Four Foot 10.00
 16. Four Foot 10.00
 17. Four Foot 10.00
 18. Four Foot 10.00
 19. Four Foot 10.00
 20. Four Foot 10.00
 21. Four Foot 10.00
 22. Four Foot 10.00
 23. Four Foot 10.00
 24. Four Foot 10.00
 25. Four Foot 10.00
 26. Four Foot 10.00
 27. Four Foot 10.00
 28. Four Foot 10.00
 29. Four Foot 10.00
 30. Four Foot 10.00
 31. Four Foot 10.00
 32. Four Foot 10.00
 33. Four Foot 10.00
 34. Four Foot 10.00
 35. Four Foot 10.00
 36. Four Foot 10.00
 37. Four Foot 10.00
 38. Four Foot 10.00
 39. Four Foot 10.00
 40. Four Foot 10.00
 41. Four Foot 10.00
 42. Four Foot 10.00
 43. Four Foot 10.00
 44. Four Foot 10.00
 45. Four Foot 10.00
 46. Four Foot 10.00
 47. Four Foot 10.00
 48. Four Foot 10.00
 49. Four Foot 10.00
 50. Four Foot 10.00
 51. Four Foot 10.00
 52. Four Foot 10.00
 53. Four Foot 10.00
 54. Four Foot 10.00
 55. Four Foot 10.00
 56. Four Foot 10.00
 57. Four Foot 10.00
 58. Four Foot 10.00
 59. Four Foot 10.00
 60. Four Foot 10.00
 61. Four Foot 10.00
 62. Four Foot 10.00
 63. Four Foot 10.00
 64. Four Foot 10.00
 65. Four Foot 10.00
 66. Four Foot 10.00
 67. Four Foot 10.00
 68. Four Foot 10.00
 69. Four Foot 10.00
 70. Four Foot 10.00
 71. Four Foot 10.00
 72. Four Foot 10.00
 73. Four Foot 10.00
 74. Four Foot 10.00
 75. Four Foot 10.00
 76. Four Foot 10.00
 77. Four Foot 10.00
 78. Four Foot 10.00
 79. Four Foot 10.00
 80. Four Foot 10.00
 81. Four Foot 10.00
 82. Four Foot 10.00
 83. Four Foot 10.00
 84. Four Foot 10.00
 85. Four Foot 10.00
 86. Four Foot 10.00
 87. Four Foot 10.00
 88. Four Foot 10.00
 89. Four Foot 10.00
 90. Four Foot 10.00
 91. Four Foot 10.00
 92. Four Foot 10.00
 93. Four Foot 10.00
 94. Four Foot 10.00
 95. Four Foot 10.00
 96. Four Foot 10.00
 97. Four Foot 10.00
 98. Four Foot 10.00
 99. Four Foot 10.00
 100. Four Foot 10.00

Approved by the Notary Public of the County and State of North Carolina, do hereby certify that the above is a true and correct copy of the original as recorded in my office.

PROPERTY OF
TERRY SPELL & RALPH HUFF
ROCKFISH TWPNSP
HOPE MILLS
SCALE: 1" = 100'

CUMBERLAND CO.
NORTH CAROLINA
AUGUST, 2002



37172
RECEIVED
8-21-2002 PM 2:15:15
GEORGE E. PALM
REGISTERED CLERK
CUMBERLAND CO., N.C.
BK.107 pg. 98

BK.107 pg. 98