

Decal goes on the passenger side of vehicle

## Applying Decals to Vehicles Quick Guide

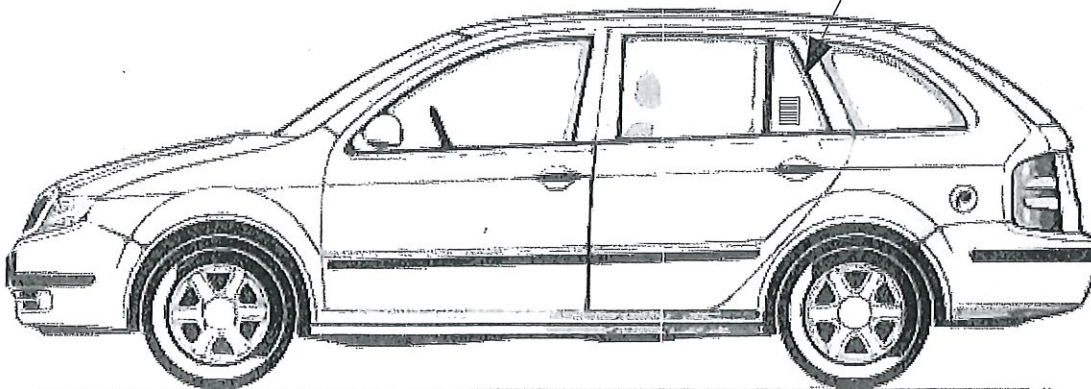
- Place decals on the same side of the vehicle that the reader is on.
- Apply to the outside of the window glass. **Decals will not read reliably through the glass.**
- Orient decal with the stripes running horizontal. (as shown).
- The bottom of the decal should be at least 36 inches above the ground.
- The top of the decal should be no more than 65 inches above the ground.
- Place decal in an unobtrusive spot on the rear side window. Windows that do not open are preferred.
- The numbers printed on the decal should be on either the left or right side, never the top or bottom. The decal should be applied vertically, aligned as straight as possible.
- If placed on the vehicle anywhere other than glass, it can be difficult to remove the decal without damaging the surface.



NO



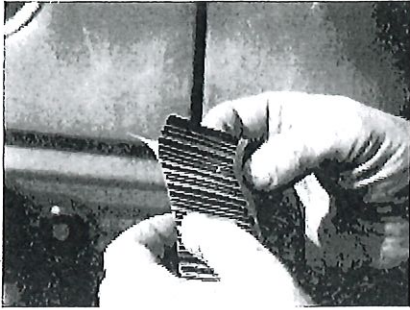
YES



Ensure that window surface is at least 59° F. If window is too cool, the decal adhesive will not bond.

Clean the window glass using SoftScrub® or other non-scratching mild abrasive cleaner. **Do not use glass cleaner containing silicone.** Mild abrasive cleaners will not scratch the window, but are very effective at removing silicone, wax or other chemical coatings that interfere with the decal bonding to the glass.

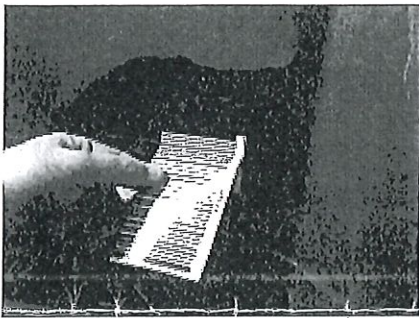
1. Peel top of decal back about 1"



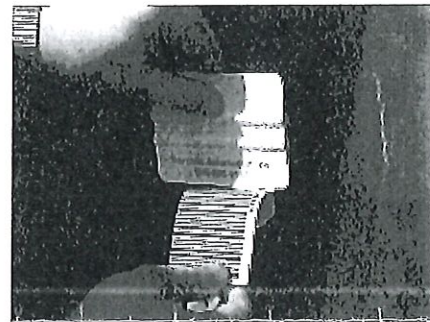
2. Bend backing paper flat against back of decal



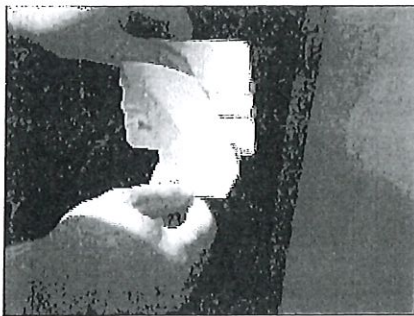
3. Line up decal in desired location on window, then press firmly on top where the backing was peeled back



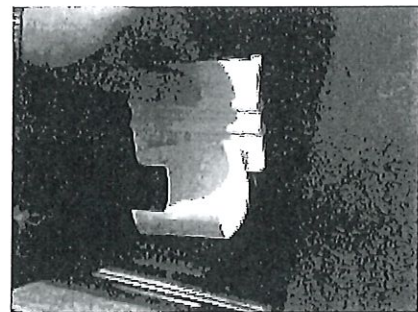
4. Place squeegee at top of decal. Press firmly against window and run it smoothly down the decal



5. Hold backing with other hand



6. As you move the squeegee down, backing will come loose



7. Decal is now in place

